

THE WIRE

WINTER NEWSLETTER • 2022

Sparkle *in the* PARK IS BACK!



IT'S BACK! MARK YOUR CALENDARS!

You've likely seen CWEP crews back at it, working in Central Park to bring you Sparkle in the Park 2022! We saw the joy & excitement in our community last year and can't wait to experience it again this holiday season.

If you're new to town or missed it last year, Sparkle in the Park is a spectacular light display covering nearly every inch of Central Park, turning it into a festive Winter Wonderland.

Join us Monday, November 28th at 6PM as we turn on the lights & kick off this Carthage holiday tradition. The lights can be viewed nightly from November 28th through January 1st, 2023, 5p.m. - 12a.m. We invite everyone to stroll through the park, take pictures, and enjoy the magic of the season. We strongly believe Carthage is one of the most beautiful communities in the country and we are excited for the holiday magic this light display provides to our family, friends, and neighbors during this time of year!

WHAT'S HAPPENING

Sparkle In The Park Is BACK!

Stay Up-To-Date & In The Know

New Faces To Our Team

What Is Public Power?

Numbers To Know

Save The Pipes!

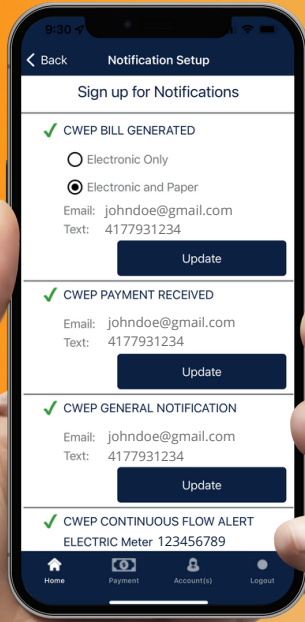
Upcoming Due Dates

Winter Is Coming, Are You Ready?

We Want To Hear From YOU!

STAY UP-TO-DATE & IN THE KNOW!

We want to serve **YOU** better! **SIGN UP** today for CWEP notifications on our app & receive:



▶ **Outage Alerts & Updates**

▶ **Due Date Reminders**

▶ **Account & Payment Updates**

▶ **Usage Alerts**

Download our app today!
Questions? Give us a call,
417-237-7300 or message
us on social media!



TRY OUR PAYMENT KIOSK!

- Transactions are available in English or Spanish
- Kiosk accepts payments made via check, cash or card 24/7
- Kiosk will dispense a receipt after the transaction has been completed for your peace of mind

NEW FACES TO OUR TEAM

Our employees are the reason for our past success & the reason we continue to provide the best low-cost, reliable, services to our Carthage community. Recently, we've been fortunate to add a few new faces to our CWEP family.



BEN SCHWARTING
Accountant



SAVANNA JONES
Customer Service Representative



MARTIN ESCOBAR
Customer Service Representative



JESSICA TROUT
Customer Service Representative

WHAT IS PUBLIC POWER?

Public Power Utilities are non-for-profit local utilities that provide electricity as an essential public service at a reasonable cost.

CWEP has been proudly serving the city of Carthage with Public Power since 1898.



Community-Owned & Customer Focused



Customer Voices MATTER



Lower Costs & Increased Reliability



Public Power is #CommunityPowered

NUMBERS TO KNOW

POLICE DEPARTMENT
417-237-7200

FIRE DEPARTMENT
417-237-7100

PUBLIC WORKS
417-237-7010

CARTHAGE CITY HALL
417-237-7000

REPUBLIC TRASH SERVICE
417-358-6999

CARTHAGE RECYCLING
417 237-7024

CALL BEFORE YOU DIG
1-800-344-7483

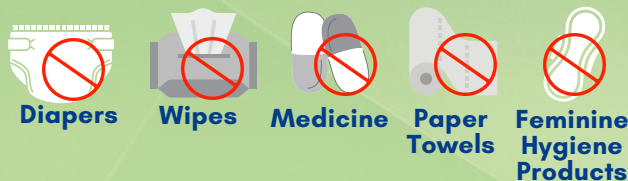
SPIRE
1-800-582-1234

SAVE THE PIPES!

Wipes, personal care products, and FOG (Fats, Oil, & Grease) can clog our sewer pipes, damaging the infrastructure and causing sewer backups and overflows. Human waste and toilet paper are the only materials that should be flushed down the toilet, and FOG should be properly disposed of rather than washed down the sink drain.

DO NOT FLUSH

Even if they say "flushable" - THEY'RE NOT!



How to properly dispose of wipes?

"Flushable Wipes" **DO NOT** disintegrate! They clog the pipes & cause damage to our wastewater treatment system. **All wipes and paper towels must be placed in the garbage for disposal. Only toilet paper should be flushed in the toilet.**

HOW TO DISPOSE OF FOG?

Residential FOG occurs as a result of cooking and preparing food in our kitchens. FOG can build up over time and cause blockages. Pour cooled FOG into a container. Store in your fridge or freezer until full or ready for disposal. Put full cups into the garbage.

- 1 SCRAPE IT** Wipe FOG & food scraps from plates & pans. Use strainers for your sink to catch food.
- 2 CAN IT** Pour FOG into a sealed container.
- 3 COOL IT** Allow FOG to cool and solidify.
- 4 TRASH IT** Dispose of FOG properly in your trash can.

UPCOMING DUE DATES

DECEMBER 2022

| SUN | MON | TUES | WED | THUR | FRI | SAT |
|-----|-----|------|-----|------|-----|-----|
| | | | | 1 | 2 | 3 |
| 4 | 5 | 6 | 7 | 8 | 9 | 10 |
| 11 | 12 | 13 | 14 | 15 | 16 | 17 |
| 18 | 19 | 20 | 21 | 22 | 23 | 24 |
| 25 | 26 | 27 | 28 | 29 | 30 | 31 |

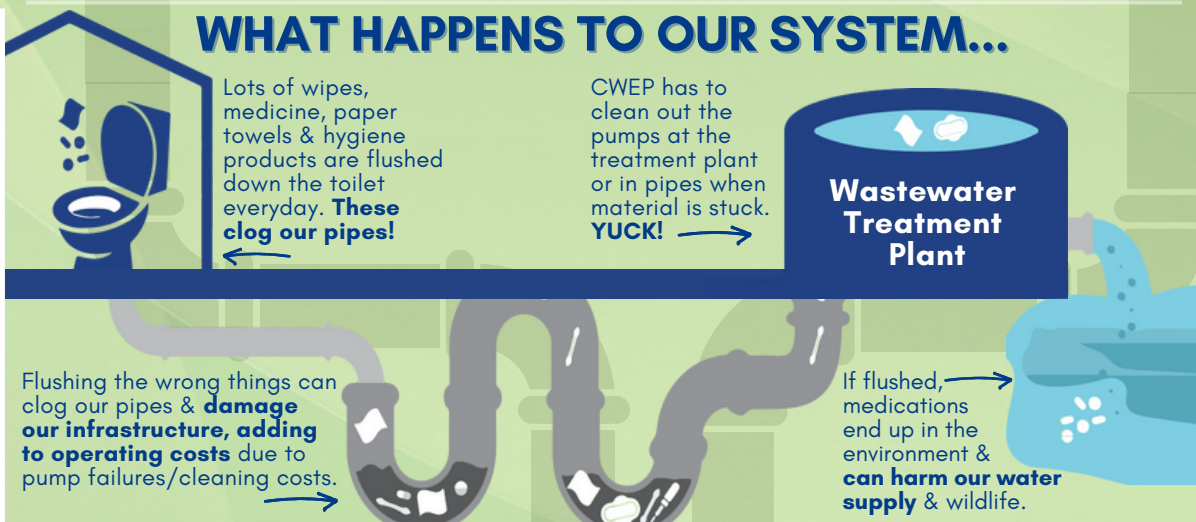
JANUARY 2023

| SUN | MON | TUES | WED | THUR | FRI | SAT |
|-----|-----|------|-----|------|-----|-----|
| 1 | 2 | 3 | 4 | 5 | 6 | 7 |
| 8 | 9 | 10 | 11 | 12 | 13 | 14 |
| 15 | 16 | 17 | 18 | 19 | 20 | 21 |
| 22 | 23 | 24 | 25 | 26 | 27 | 28 |
| 29 | 30 | 31 | | | | |

FEBRUARY 2023

| SUN | MON | TUES | WED | THUR | FRI | SAT |
|-----|-----|------|-----|------|-----|-----|
| | | | 1 | 2 | 3 | 4 |
| 5 | 6 | 7 | 8 | 9 | 10 | 11 |
| 12 | 13 | 14 | 15 | 16 | 17 | 18 |
| 19 | 20 | 21 | 22 | 23 | 24 | 25 |
| 26 | 27 | 28 | | | | |

WHAT HAPPENS TO OUR SYSTEM...



WINTER IS COMING, ARE YOU READY?

Winter brings freezing temperatures which encourages you to turn up your thermostat to stay cozy. However, increasing the heat in your home can mean an increase in your utility bills. Don't worry, we've come up with some energy-saving tips to help you save money & stay comfortable as Winter approaches. **What can you cross off your checklist?**

- INSPECT FURNACE & CHECK FOR DRAFTS IN DOORS**
- REVERSE YOUR CEILING FAN DIRECTION**
- OPEN BLINDS & CURTAINS TO NATURALLY HEAT YOUR HOME**
- SET YOUR THERMOSTAT TO 68° & LOWER WHEN YOU'RE AWAY**
- SEAL DOORS & WINDOWS WITH WEATHER STRIPPING**
- CHECK INSULATION LEVELS**
- DON'T BLOCK YOUR VENTS**

For More Tips on how to keep your home running as smoothly as possible this Winter, **SCAN HERE** to check out our **Home Energy Calculator TODAY!**





Carthage Water & Electric Plant

627 W. Centennial Ave.
P.O. Box 611
Carthage, MO 64836

MGKT MAIL
PAID
PERMIT NO. 295
CARTHAGE, MO
64836

**CONNECT WITH
US TODAY!**

@cwep.carthagemo

@cwep_carthagemo

@cwep.carthagemo

For the most recent CWEP news & updates be sure to **FOLLOW US** on social media!

WE WANT TO HEAR FROM YOU!

Happy customers **ARE OUR GOAL!**

CWEP is conducting a Customer Satisfaction Survey to help us better serve our Carthage community. Please take a few minutes to let us know how we're doing! ★★★★★



Scan Here!



OR VISIT WWW.CWEP.COM

