

THE WIRE

WINTER • 2023



Light Up CARTHAGE Lighting Contest

“LIGHT UP CARTHAGE”, LIGHTING CONTEST!

CWEP is proud to reintroduce the “Light Up Carthage” Lighting Contest. In 1938, CWEP first featured a lighting contest to bring the Carthage community together and spread holiday joy, and in honor of our 125th anniversary year, we decided to bring it back! Impress your neighbors and bring cheer to our Carthage community by decorating your home this holiday season. The most festive home in each ward inside city limits and one home outside city limits, will win an award as well as bragging rights for a full year!

Rules: Entrants must be residential customers of CWEP and must enter to win. (CWEP employees are not eligible) To enter, visit our website (www.cwep.com) or stop by our CWEP complex to fill out an entry form. All entries must be submitted by 12/15 to be judged on the evening of Monday, 12/18. Prizes will be awarded on 12/20. Get creative and let’s light up our hometown!



Carthage Press December 13, 1938

REGISTER TODAY →



Or stop in our office
(627 W. Centennial Ave.)
to register your home!

WHAT'S HAPPENING

Light Up Carthage!

New Faces To Our Team

Happy Retirement

Scams, Know The Signs

Tree Trimming with
Safety in Mind

What's Yours? What's Ours?
Electrical Service

Upcoming Due Dates

GM Receives Utility Award

Holiday Office Hours

Cut Your Costs

You're Invited to Sparkle in the Park!

NEW FACES TO OUR TEAM

We've added a few new faces to our CWEP family, be sure to give them a warm welcome!



LANE ALEXANDER
Comm. Field Tech.



MANDY BATES
Senior Utility Accountant

HAPPY RETIREMENT




DALE BAILEY
Power Plant Dispatcher
17 Years of Service




VALERIE BUTLER
Accounts Payable Clerk
23+ Years of Service


SCAMS, KNOW THE SIGNS

RECOGNIZING A **SCAM**

CWEP will **NOT** contact you & demand immediate payment over the phone 

CWEP will **NOT** threaten service disconnection on short notice 

CWEP will **NOT** ask you for payment via gift card or ask you to purchase a gift card to make a payment 

CWEP will **ALWAYS** notify you with a past due notice when your account is past due 



Stay Vigilant! If you receive a suspicious call that looks like our CWEP number (417) 237-7300 requesting a payment, please **hang up and call CWEP directly at (417) 237-7300.**

TREE TRIMMING WITH SAFETY IN MIND

Trees beautify our community and help keep our environment clean. But trees that grow into or too close to power lines can result in power outages, fires, and safety hazards. That's why CWEP contracts with Poor Boy Tree Trimming, a company that employs certified arborists, to operate a vegetation management program. This work keeps our power lines clear and our trees healthy!



CWEP tree trimming contractors are responsible for trimming and removing trees to create a minimum 10ft clearance along our primary and transmission lines. Property owners are responsible for trimming and removing trees on the secondary line that brings electric service from the transformer to their homes. Customers should work with licensed and insured tree trimmers to safely perform this work.

Hiring a Qualified Tree Trimming Professional?

Remember, safety first! Call CWEP, 417-237-7300 at least 24 hours before tree trimmers start a job near energized lines and equipment.

NUMBERS TO KNOW

POLICE DEPARTMENT
417-237-7200

FIRE DEPARTMENT
417-237-7100

PUBLIC WORKS
417-237-7010

CARTHAGE CITY HALL
417-237-7000

REPUBLIC TRASH SERVICE
417-358-6999

CARTHAGE RECYCLING
417-237-7024

CALL BEFORE YOU DIG
1-800-344-7483

SPIRE
1-800-582-1234

WHAT'S YOURS? WHAT'S OURS? ELECTRIC SERVICE

RESPONSIBILITIES



Equipment That **YOU** Are Responsible For Includes:

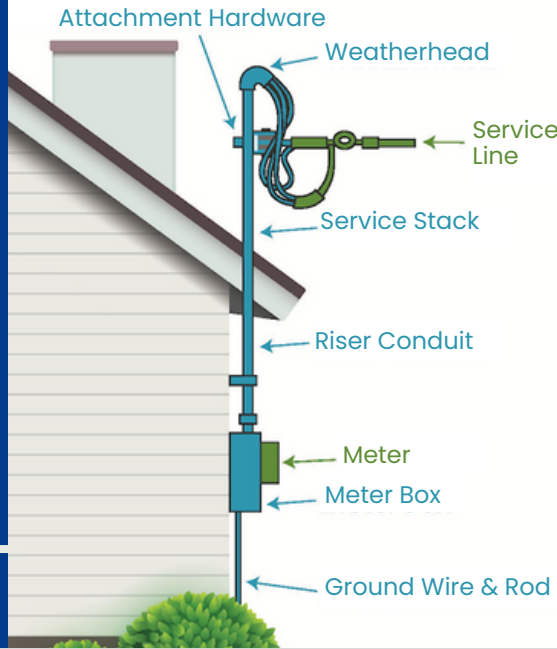
- Attachment Hardware
- Weatherhead
- Service Stack (overhead)
- Riser Conduit/Conduit
- Meter Box
- Ground Wire & Rod (overhead)

Equipment That **CWEP** Is Responsible For Includes:

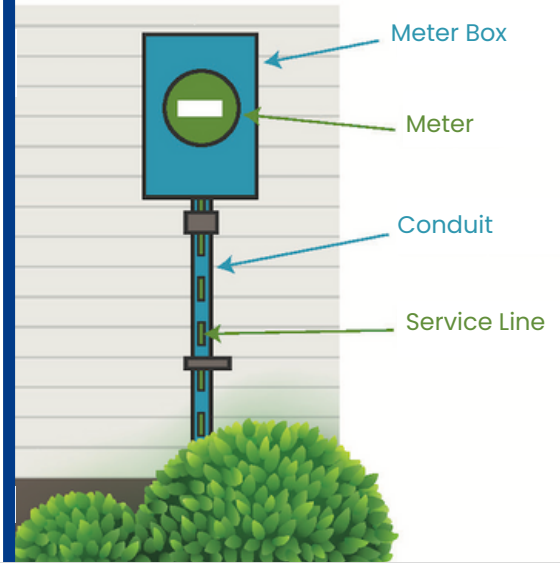
- CWEP Service Line
- CWEP Electrical Meter

Questions? Give us a call!
417-237-7300

OVERHEAD SERVICE



UNDERGROUND SERVICE



UPCOMING DUE DATES

NOVEMBER 2023

SUN	MON	TUES	WED	THUR	FRI	SAT
			1	2	3	4
5	6	7	8	9	10	11
12	13	14	15	16	17	18
19	20	21	22	23	24	25
26	27	28	29	30		

DECEMBER 2023

SUN	MON	TUES	WED	THUR	FRI	SAT
					1	2
3	4	5	6	7	8	9
10	11	12	13	14	15	16
17	18	19	20	21	22	23
24	25	26	27	28	29	30
30						

JANUARY 2024

SUN	MON	TUES	WED	THUR	FRI	SAT
	1	2	3	4	5	6
7	8	9	10	11	12	13
14	15	16	17	18	19	20
21	22	23	24	25	26	27
28	29	30	31			

GM RECEIVES PUBLIC UTILITIES AWARD



Left to right: **Duncan Kincheloe** (Former MPAU CEO), **Chuck Bryant** (CWEP GM), & **John Twitty** (MPAU CEO)

The Missouri Public Utility Alliance ("MPUA," an organization representing publicly owned utilities across the state to advance public power interests and help utilities better serve their customers) recently awarded CWEP's General Manager, Chuck Bryant, with the Duncan Kincheloe Value of Hometown Utilities Award. This prestigious award is given annually to an MPAU member who has exemplified the benefits of local utility ownership to better their community. Chuck has worked for CWEP for over 27 years, working in Customer Service, Technical, and Electric Departments prior to his appointment as General Manager in 2015. Whether through his position with CWEP or his time spent serving on local boards and foundations, Chuck always has the best interest of the Carthage community at heart. Please join us in congratulating Chuck on his award!

HOLIDAY OFFICE HOURS

11.23	CLOSED
11.24	CLOSED
12.22	8:00 AM - 5:00 PM
12.25	CLOSED
12.26	CLOSED
12.27	8:00 AM - 5:00 PM
12.28	8:00 AM - 5:00 PM
12.29	8:00 AM - 5:00 PM
01.01	CLOSED

From our CWEP family to yours, we wish you a Merry Christmas & a Happy New Year!

CUT YOUR COSTS

3 Quick ways to reduce energy usage & costs this winter!

- **LOWER YOUR THERMOSTAT**
Save approximately 3% on your heating bill for each degree that you turn your thermostat down during the winter.
- **INSULATE WINDOWS & DOORS**
Up to 25% of heat loss in your home comes from windows & doors. Make sure those areas are well insulated before the winter cold hits.
- **REVERSE CEILING FAN**
Reverse the rotation of your ceiling fan to clockwise to push warm air out & down, helping evenly distribute warm air in your home.

For More Tips Visit ➤ www.cwep.com

For Payment Options Visit,
WWW.CWEP.COM



627 W. Centennial Ave.
P.O. Box 611
Carthage, MO 64836

MGKT MAIL
PAID
PERMIT NO. 295
CARTHAGE, MO
64836

**CONNECT WITH
US TODAY!**

- @cwep.carthagemo
- @cwep_carthagemo
- @cwep.carthagemo

For the most recent CWEP news & updates be sure to **FOLLOW US** on social media!

Sparkle *in the* PARK

PRESENTED BY



You're Invited to the official Lighting Ceremony
MONDAY, NOVEMBER 27TH AT 6PM IN CENTRAL PARK

