

# THE WIRE

WINTER • 2024



## Sparkle *in the* PARK

### SPARKLE IN THE PARK RETURNS FOR THE 2024 HOLIDAY SEASON!

CWEP crews are back at it, transforming Central Park for the much-anticipated "Sparkle in the Park" 2024! Even though devastating Spring storms damaged several trees in Central Park, we're excited to confirm that this beloved light display will return for its 4th year, just as beautiful as ever.

New to Carthage? Sparkle in the Park is a dazzling light display created by CWEP employees, turning Central Park into a Winter Wonderland. Due to the Carthage Christmas parade falling early this year, we'll be kicking off this cherished holiday tradition on **Monday, November 25th at 6PM!**

**The lights will shine nightly from November 25th to January 1st, 5 p.m. to 12 a.m.** Bring your loved ones and enjoy the holiday magic!



### WHAT'S HAPPENING

Sparkle In The Park is BACK!

Looking For Utility Assistance?

Protect Your Pipes This Winter

CWEP System Upgrades: Preparing  
Carthage For The Future!

"Light Up Carthage" Lighting Contest

ARPA Funding For CWEP

CWEP Dates To Remember

How Does It Work?

Space Heater Safety

Switch To eCarthage Fiber Internet!  
Experience The Difference!



## LOOKING FOR UTILITY ASSISTANCE?

### SAVE THE DATE!

**Monday, November 11th**

**627 W. Centennial Ave.  
2PM - 7PM**

The Economic Security Mobile Bus  
will be set up at the CWEP Complex  
(627 W. Centennial Ave.) to  
assist customers through the  
application process!



[WWW.ESCSWA.ORG/UTILITY-ASSISTANCE/](http://WWW.ESCSWA.ORG/UTILITY-ASSISTANCE/)

## PROTECT YOUR PIPES THIS WINTER

- 1 Insulate Your Pipes:** Wrap exposed pipes in foam insulation sleeves or use heat tape, especially in unheated areas like basements, crawl spaces, attics, or exterior walls.
- 2 Seal Gaps & Cracks:** Seal any gaps or cracks in walls, floors, and around windows or doors near pipes to prevent cold air from reaching them.
- 3 Keep A Consistent Temperature:** Maintain a steady indoor temperature, even at night. Set your thermostat no lower than 55°F to keep pipes warm.
- 4 Let Faucets Drip:** Allow a small trickle of water to flow through faucets connected to vulnerable pipes. Moving water is less likely to freeze, which can help prevent ice blockages.

**Questions? Give us a call! 417-237-7300**

## CWEP UPGRADES: PREPPING FOR THE FUTURE!

CWEP is excited to announce we have completed the replacement of our 69kV transmission line, located on the East side of town, and have begun significant renovations to two of our CWEP substations. These important infrastructure projects play a vital role in ensuring the continued delivery of reliable and efficient power service to the Carthage community. By completing these necessary upgrades, we are able to strengthen our system's



*CWEP 69kV Ribbon Cutting - July 30th, 2024*

resilience, enhance overall operational efficiency, improve reliability, and better position our community for future growth. We want to thank you, our customers, for your patience during these renovation projects!



*We honored two CWEP retirees, Jerry Simmons and John Garrett, for their work on the construction of the original 69kV line*



*Construction of the new 69kV transmission line*

## GET OUR CWEP APP!

We put the power at your finger tips with our CWEP mobile app! Easily manage your account—anytime, anywhere. Download now for a faster way to manage your account!

**Report Outages**

**Make Payments**

**View Your Usage**

**Manage Your Account**

**& SO MUCH MORE!**

**Download Our CWEP App TODAY!**

Questions?  
Give us a call,  
**417-237-7300!**





# LIGHT UP CARTHAGE WITH CWEP!

## Get ready to shine, Carthage!

CWEP is thrilled to bring back our beloved "Light Up Carthage" lighting contest, a tradition that first lit up our community in 1938. We're inviting you to help brighten our town with festive holiday spirit. This is your chance to dazzle your neighbors and spread cheer by decorating your home this holiday season.

We will be awarding prizes to the most festive homes in each ward within the city limits, plus one standout home outside the city limits. Winners will not only earn bragging rights for the entire year but also an exciting award!

### HOW TO ENTER:

- Participation is open to **ALL residential customers of CWEP** (except CWEP employees).
- To join the fun, simply **fill out an entry form** on our website ([www.cwep.com](http://www.cwep.com)) or drop by the CWEP Complex.
- **Submit your entry** by December 9th. Judging will take place on the evening of December 11th, with winners announced on December 12th.

*Let's get creative and make Carthage shine brighter than ever this holiday season!*



REGISTER HERE



# ARPA FUNDING FOR CWEP

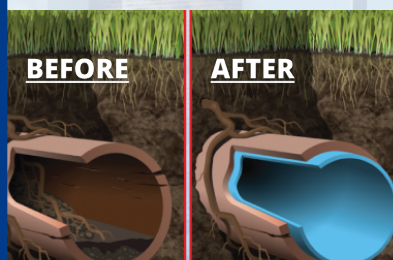
The American Rescue Plan Act (ARPA) was enacted in 2021 to provide economic relief from the COVID-19 pandemic, with a portion of the funds specifically allocated to assist state and local governments. ARPA funds were distributed to states, counties, cities, and municipalities to support various projects aimed at improving public health, economic recovery, and infrastructure development. These funds offered much-needed flexibility, allowing local governments to invest in critical areas such as water, sewer, and broadband infrastructure, as well as pandemic-related expenses.

CWEP is deeply grateful to State Representative Cody Smith for recognizing the importance of dedicating



ARPA funds to local utilities. Through his work as the Budget Chair for the Missouri House of Representatives, Rep. Smith was able to allocate \$2 million from the State's budget directly to CWEP for use on wastewater infrastructure improvement projects. With this money, CWEP will be installing cured-in-place-pipe (CIPP) liners throughout several miles of our wastewater system. These liners can be placed on the inside of damaged pipes, and once cured, allow the pipe to function correctly and greatly extend the useful life of the wastewater pipe. Each year, CWEP inserts these liners in portions of our system, but thanks to Rep. Smith, we will be able to line many more miles of pipes this year, ensu-

-ring more efficient and sustainable wastewater services for our customers.



# SPACE HEATER SAFETY

Keep your home **WARM** this Winter while also keeping it **SAFE!**

- 1 Keep space heaters at least **3 FEET** away from all flammable items.
- 2 **NEVER** plug in more than 1 heating appliance into an outlet & **DON'T** use extension cords or power strips.
- 3 Place space heaters on a **SOLID FLAT** surface.
- 4 Turn space heaters **OFF** and **UNPLUG** them before you go to bed, leave the room/home.

Questions? Give us a call! 417-237-7300

# CWEP DATES TO REMEMBER

## NOVEMBER 2024

SUN	MON	TUES	WED	THUR	FRI	SAT
					1	2
3	4	5	6	7	8	9
10	11	12	13	14	15	16
17	18	19	20	21	22	23
24	25	26	27	28	29	30

## DECEMBER 2024

SUN	MON	TUES	WED	THUR	FRI	SAT
1	2	3	4	5	6	7
8	9	10	11	12	13	14
15	16	17	18	19	20	21
22	23	24	25	26	27	28
29	30	31				

## JANUARY 2024

SUN	MON	TUES	WED	THUR	FRI	SAT
			1	2	3	4
5	6	7	8	9	10	11
12	13	14	15	16	17	18
19	20	21	22	23	24	25
26	27	28	29	30	31	

■ Due Dates ■ Office Closures  
■ Sparkle In The Park Lighting

For Payment Options Visit,  
[WWW.CWEP.COM](http://WWW.CWEP.COM)

# HOW DOES IT WORK?

As we've experienced lately, squirrels, birds, and wildlife in general can often be the culprits behind power outages. It's hard to believe, but true!



Even though you may not experience a sustained outage when these creatures get in our system, you may experience a "blink" in your service.

**Did you know, this is actually how our electric system is made to work?** Our system utilizes reclosers and breakers to help reduce the impact of these interruptions or issues on our system. When a squirrel, bird, or a falling branch hits a power line, the reclosers act like automatic circuit breakers, attempting to restore power by switching on and off causing those "blinks" a few times before staying off if the issue persists. This helps clear momentary faults or issues on our system and minimizes the chance for longer outages. If the issue can't be cleared, the breaker will remain "open" until the problem is fixed. With this system in place we are able to reduce the downtime our customers may face due to wildlife and Mother Nature.

One of the best ways to stay prepared and protect your essential devices in this instance, is with an Uninterruptible Power Supply (UPS) system. A UPS acts as a backup battery, keeping your lights on and devices running when the unexpected happens. Don't let Mother Nature or furry creatures leave you in the dark, and always stay prepared!





627 W. Centennial Ave.  
P.O. Box 611  
Carthage, MO 64836

MGKT MAIL  
**PAID**  
PERMIT NO. 295  
CARTHAGE, MO  
64836

**CONNECT WITH  
US TODAY!**



For the most recent CWEP  
news & updates be sure to  
**FOLLOW US** on social media!

# MAKE THE SWITCH



# FIBER

**Unleash the POWER of Fiber**  
& NEVER miss a minute of the game!

✓ **NO** Long-Term Contracts

✓ **NO** Inflated Pricing

✓ **NO** Cancellation Fees

**REQUEST SERVICE  
TODAY!**



**Fast. Fair. Hassle-Free**  
INTERNET EXPERIENCE!  
**WWW.CWEP.COM**

plans starting at just  
**\$50** MO.